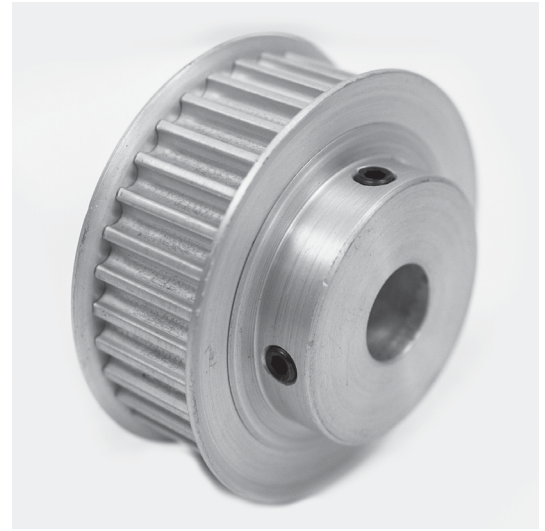


POWERHOUSE™ TIMING PULLEYS

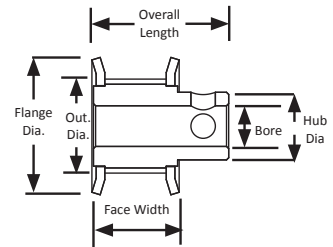
(Compatible with PowerGrip® GT2® and PowerGrip® GT3® pitches)

5 mm Pitch
For 15 mm Wide Belts
Hub
Aluminum
Clear Anodized
Finished Bore

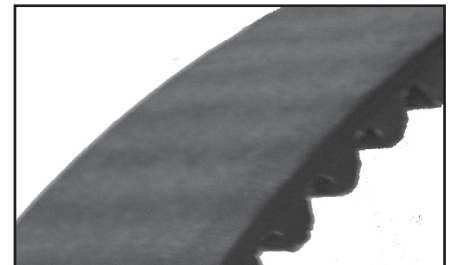
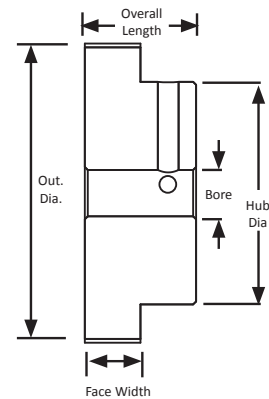


Part Number	No. of Teeth	Type	Pitch Dia. (in)	Out. Dia. (in)	Flange Dia. (in)	Bore (in)	Face Width (in)	Overall Length (in)	Hub Dia. (in)	Set Screw
12-5P15-6FA3	12	6F	0.752	0.707	0.875	0.250	0.781	1.031	0.438	1 x 8-32
13-5P15-6FA3	13	6F	0.815	0.770	0.938	0.250	0.781	1.031	0.500	1 x 8-32
14-5P15-6FA3	14	6F	0.877	0.832	1.000	0.250	0.781	1.031	0.500	2 x 8-32 @ 90°
15-5P15-6FA3	15	6F	0.940	0.895	1.063	0.250	0.781	1.031	0.563	2 x 8-32 @ 90°
16-5P15-6FA3	16	6F	1.003	0.958	1.094	0.250	0.781	1.031	0.563	2 x 8-32 @ 90°
17-5P15-6FA3	17	6F	1.065	1.020	1.188	0.250	0.781	1.031	0.625	2 x 8-32 @ 90°
18-5P15-6FA3	18	6F	1.128	1.083	1.250	0.250	0.781	1.031	0.688	2 x 8-32 @ 90°
19-5P15-6FA3	19	6F	1.191	1.146	1.313	0.250	0.781	1.031	0.750	2 x 8-32 @ 90°
20-5P15-6FA3	20	6F	1.253	1.208	1.375	0.250	0.781	1.031	0.813	2 x 8-32 @ 90°
22-5P15-6FA3	22	6F	1.379	1.334	1.500	0.250	0.781	1.031	0.938	2 x 8-32 @ 90°
24-5P15-6FA3	24	6F	1.504	1.459	1.625	0.250	0.781	1.094	1.000	2 x 8-32 @ 90°
25-5P15-6FA3	25	6F	1.566	1.521	1.688	0.250	0.781	1.094	1.000	2 x 8-32 @ 90°
26-5P15-6FA3	26	6F	1.629	1.584	1.750	0.250	0.781	1.094	1.063	2 x 8-32 @ 90°
28-5P15-6FA3	28	6F	1.754	1.709	1.875	0.250	0.781	1.094	1.188	2 x 8-32 @ 90°
30-5P15-6FA3	30	6F	1.880	1.835	2.000	0.250	0.781	1.094	1.188	2 x 8-32 @ 90°
32-5P15-6FA3	32	6F	2.005	1.960	2.125	0.250	0.781	1.094	1.250	2 x 8-32 @ 90°
34-5P15-6FA3	34	6F	2.130	2.085	2.250	0.250	0.781	1.094	1.375	2 x 8-32 @ 90°
36-5P15-6A4	36	6	2.256	2.211	-	0.313	0.781	1.187	1.500	2 x 8-32 @ 90°
38-5P15-6A4	38	6	2.381	2.336	-	0.313	0.781	1.187	1.500	2 x 8-32 @ 90°
40-5P15-6A4	40	6	2.506	2.461	-	0.313	0.781	1.187	1.500	2 x 8-32 @ 90°
44-5P15-6A4	44	6	2.757	2.712	-	0.313	0.781	1.187	1.500	2 x 8-32 @ 90°
48-5P15-6A4	48	6	3.008	2.963	-	0.313	0.781	1.187	1.500	2 x 10-32 @ 90°
48-5P15-6A5	48	6	3.008	2.963	-	0.375	0.781	1.187	1.500	2 x 10-32 @ 90°
50-5P15-6A4	50	6	3.133	3.088	-	0.313	0.781	1.187	1.500	2 x 10-32 @ 90°
50-5P15-6A5	50	6	3.133	3.088	-	0.375	0.781	1.187	1.500	2 x 10-32 @ 90°
56-5P15-6A4	56	6	3.509	3.464	-	0.313	0.781	1.187	1.500	2 x 10-32 @ 90°
56-5P15-6A5	56	6	3.509	3.464	-	0.375	0.781	1.187	1.500	2 x 10-32 @ 90°
60-5P15-6A4	60	6	3.760	3.715	-	0.313	0.781	1.187	1.500	2 x 10-32 @ 90°
60-5P15-6A5	60	6	3.760	3.715	-	0.375	0.781	1.187	1.500	2 x 10-32 @ 90°
62-5P15-6A4	62	6	3.885	3.840	-	0.313	0.781	1.187	1.500	2 x 10-32 @ 90°
62-5P15-6A5	62	6	3.885	3.840	-	0.375	0.781	1.187	1.500	2 x 10-32 @ 90°
70-5P15-6A5	70	6	4.386	4.341	-	0.375	0.781	1.187	1.500	2 x 10-32 @ 90°
72-5P15-6A5	72	6	4.511	4.466	-	0.375	0.781	1.187	1.500	2 x 10-32 @ 90°

TYPE 6F



TYPE 6



For matching 5 mm POWERHOUSE™ pitch belts, see page 237.